

## datasheet

### trak | uplift impulse

#### 01 battery system



	impulse 220Ah	impulse (+) 170Ah
technology	maintenance-free, sealed lead-acid battery	
system voltage	24 V	
system capacity	220 Ah	170 Ah
optional configuration	-	onboard charger
system dimensions (LxWxH)	624 mm x 212 mm x 627 mm / DIN 43535 B	
system weight	201 kg	201 kg (with charger: 205 kg)
pol screw	M8x22, plastic coating, with measuring points	
cell connector	cable connectors Ø 35 mm <sup>2</sup> , 110 and 700 mm	
max. discharge current	1527 A – 3 min (U <sub>end</sub> =1,60 V/C)	
max. discharge depth	80% C <sub>5</sub>	
suitable for opportunity charging	yes	
suitable for rapid charging	yes	
energy efficiency ratio $\eta_{Wh}$ (DIN EN 16796-1)	up to 85%	
battery operating temperature	-20°C to + 45°C	
ventilation	DIN EN 62485-3	
charging interval during storage	3 months (at 20°C)	
recuperation	U < 2,40 V/cell: no current limitation required U > 2,40 V/cell: max. allowed current 1A/100Ah	
application	<ul style="list-style-type: none"> <li>• light and medium duty applications</li> <li>• dynamic and short-term high load requirements</li> <li>• clean room applications</li> <li>• food industry</li> <li>• logistics companies with multiple shift operation</li> </ul>	

#### 02 block batteries

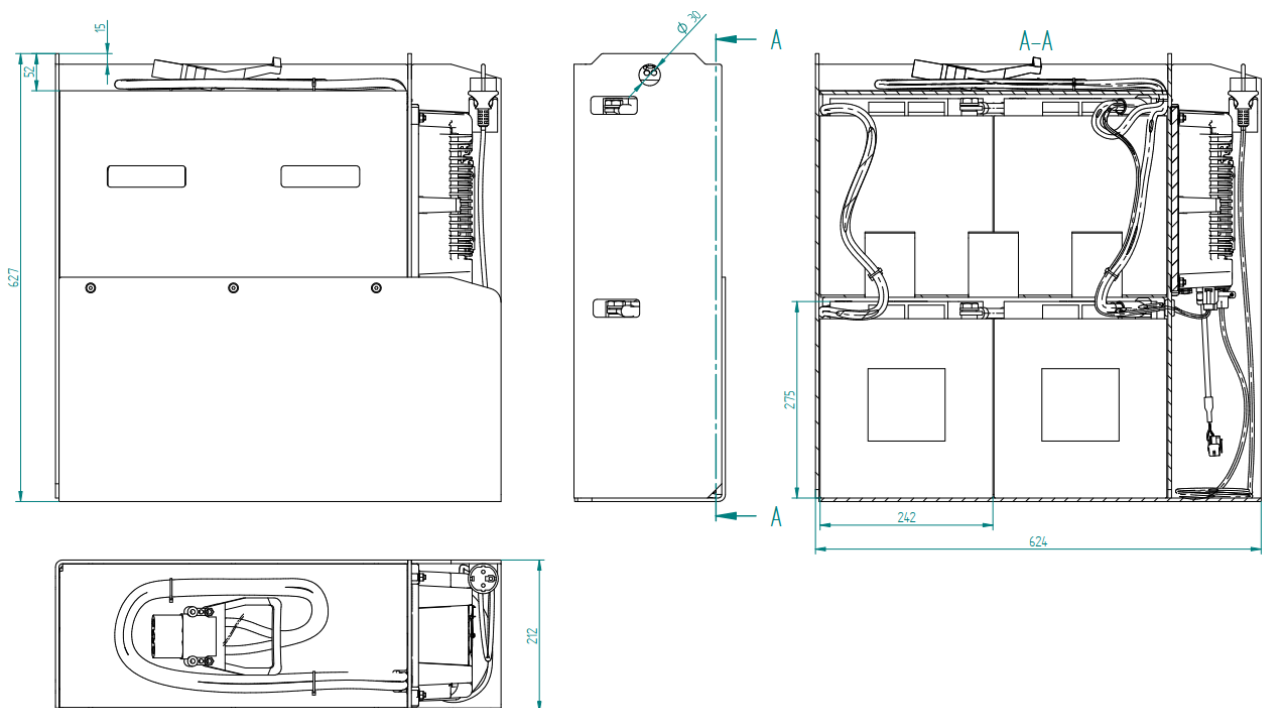
	block battery based on absorbent glass mat technology (AGM)	
bloc design	block battery based on absorbent glass mat technology (AGM)	
bloc voltage	6 V	6 V
bloc capacity	220 Ah	170 Ah
bloc dimensions (LxWxH)	308 mm x 170 mm x 275 mm	242 mm x 170 mm x 275 mm
weight +/- 5%	41 kg	32 kg
lifetime in cycles	up to 1000 cycles at 80% DOD	
protection class	IP25 to DIN 40050, touch protected	

## 03 onboard charger

performance	750 W	operation temperature	-40°C to 65°C
output voltage nominal	24 V	protection class	IP 66
output voltage range	19,4 to 34V	dimensions	230 mm x 153,5 mm x 85 mm
efficiency	94 %	weight	4 kg
max. charging current	30 A	mains voltage range	100 to 240V (50/60Hz)

## 04 technical drawing

### 170 Ah-System



### 220 Ah-System

