



**trak | systemizer rapid**

Fast charging system  
for productivity gains

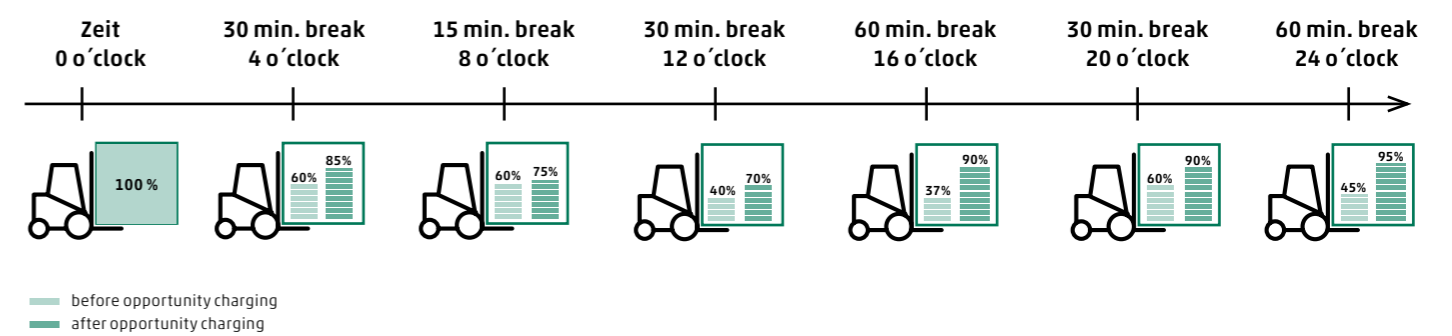


## trak | systemizer rapid Fast charging system for productivity gains

trak | systemizer rapid is a decentralised fast charging system consisting of a for the use optimised lead-acid traction battery with a battery monitoring unit and a quick charger. All system components are perfectly coordinated in order to allow a multi-shift application without battery change.

With 3.45 hours charging time per day, HOPPECKE clients could use their industrial truck for three shifts on 5 days a week.

### Capacity course during a 24-hour application with opportunity charging during



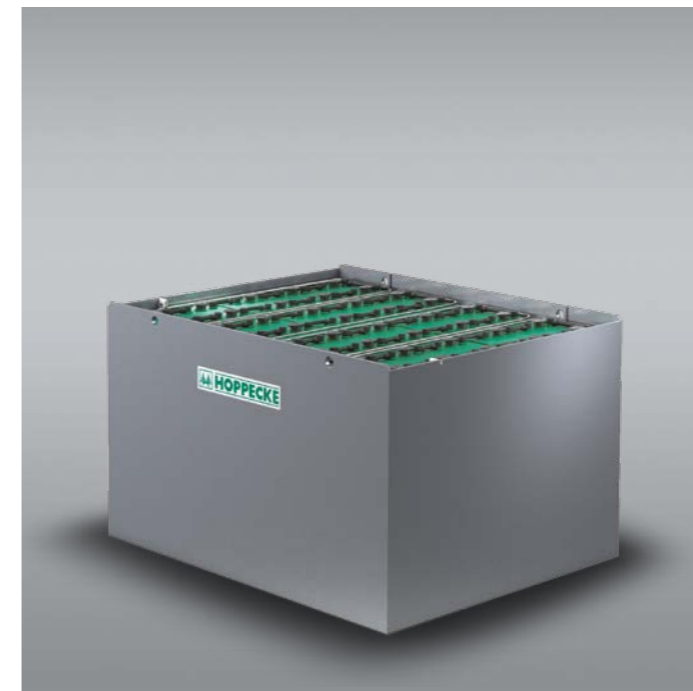
## Systemizer: More than the sum of its individual parts

We check the feasibility of the quick charging for your application already beforehand and compile an individual solution with perfectly coordinated system components. For an ideal application of our system at your location, we gladly take on the responsibility.



## trak | rapid & trak | collect

The battery monitoring unit trak | collect captures the state of trak | air, the optimised PzS battery with electrolyte circulation, in real time. By measuring temperature, voltage, electrolyte level and charge as well as discharge current, the battery is charged considerably.



### Your advantage with trak | rapid & trak | collect

- Protection of the battery against overheating and overcharge
- Communication with the charger – An ideal coordination of the operating units achieves a perfect lifespan of the battery
- Real time adaptation of the battery charge algorithms

## trak | power premium

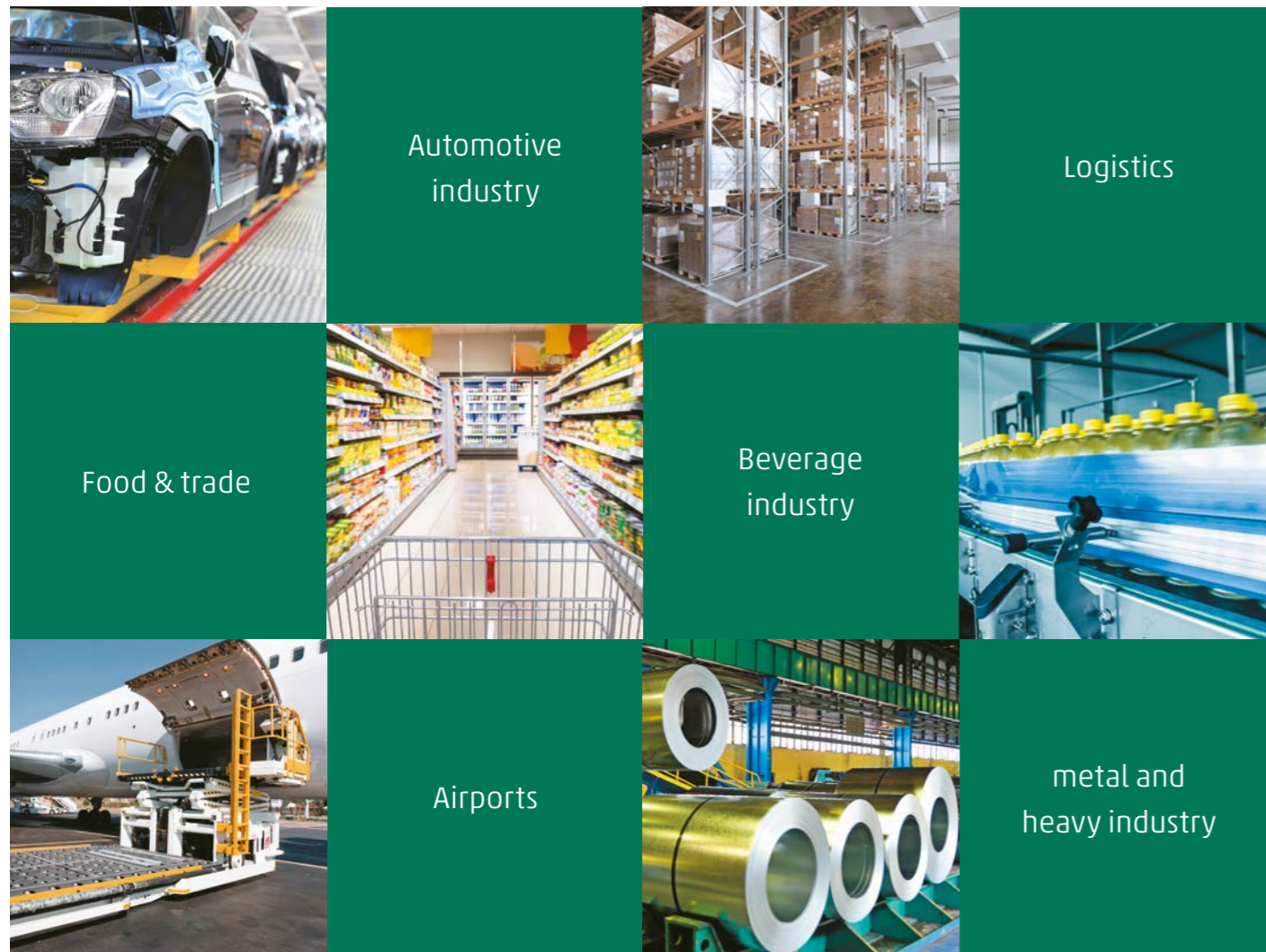
trak | power premium is a primary switched high-frequency charging technology with powerfactor correction. The charger consists of several power end stages, which can be modified at any time, in order to increase the power. The redundant circuit of the power module guarantees a high operational safety.



### Your advantage with trak | power premium

- Modular structure
- Space-saving Design

## Typical fields of application



## Your advantage with HOPPECKE

### **With a trak | systemizer rapid, you can handle more material**

The quick opportunity charging is integrated into your processes and takes place, for example, during break times and shift change. You do not lose time during the "real work" for longlasting charging or even the change of batteries. Thus, you can use the working hours more efficiently and handle more material.

### **You save time and increase your productivity**

trak | systemizer rapid is installed at your company at different decentralised places in consideration of your present production processes. The driver does not drive to a central battery charging room anymore, but drives directly to the next available charging point. The travel time to a central charging station as well as the change of batteries cease to exist. You save time, which is at your disposal for the execution of your core tasks.

### **You gain a greater scope for investments in your core business**

With trak | systemizer rapid, you can drive more than three shifts on 5 days a week with only one battery. You do not need replacement batteries. Without trak | systemizer rapid, you generally need one or two replacement batteries for 3 shifts. You do not need additional investments for central charging stations (ventilation system, changing devices, etc.). You even save twice - Investment and, at the same time, operating costs. You do not need staff for the changing of the battery. This remains inside the vehicle and is recharged during the vehicle's dwell time included in the process. Furthermore, you only need one battery per vehicle and, thus, reduce your battery maintenance costs (water refilling, battery cleaning and testing).

All things considered, you reach a quicker Return on Investment (ROI) with trak | systemizer rapid.

### **Property areas cost much money and should be used efficiently - trak | systemizer rapid helps you with this**

With trak | systemizer rapid, no production or logistics area for a central charging station has to be provided. You gain these now vacant areas for your production and logistics tasks and can let these areas work more efficiently.

The chargers trak | power premium have, depending on their size, only a width and depth of maximal 600 x 430 mm. You can decide freely, where to set up your charger and you can freely design your valuable and usable area.

### **trak | collect protects your fast charging system, this means your investment**

A HOPPECKE battery monitoring unit is installed on each battery, which monitors the temperature, battery voltage, electrolyte level and the current charge level of the battery. These information are continuously transferred to the battery charger and the respective battery charging algorithm is adapted in real time. With trak | collect, your battery is protected against overheating and overcharge.

### **trak | systemizer rapid - Your concrete contribution to the environmental protection, for the sake of the environment**

With the application of trak | systemizer rapid, you only need one battery per vehicle. Consequently, only one battery has to be disposed of and recycled.

## At a glance:

- High productivity gains
- Reduction of your investment and operating costs
- Quick achievement of the ROI
- Gain of useful production and logistics areas
- Green Image with a concrete contribution to the environmental protection

HOPPECKE Batterien GmbH & Co. KG  
Bontkirchener Str. 1  
D - 59929 Brilon  
Tel: +49 (0) 2963 61-0  
Fax: +49 (0) 2963 61-449  
E-Mail: [motivepower@hoppecke.com](mailto:motivepower@hoppecke.com)

